

# Silverton Country Historical Society

Established in 1974

Over Forty Years of History in the Making



Museum and Office  
428 South Water Street

## Coming September 21! SCHS Book / Yard Sale!

Another chance to grab some deals on items from our basement that do not satisfy our “Silverton First” mission. Not sayin’ there are priceless relics available...just the usual basement cast-offs...but maybe something you absolutely have to have (and we don’t!). AND this year we have added some books from our massive “Old and Cool, But Why Are They at the Museum?” collection. History buffs, old book geeks, crafters, decorators. You will be sure to find just the thing!



**Saturday, September 21**

**10 am till 3 pm**

**(Unless we are having so much fun, we decide to stay longer!)**

And...if that weren’t enough--

## The 3rd Annual Fischer’s Mill Music Festival

Saturday, September 21 -- 1 to 9 pm

Olde Mill Park - Behind the Library



Nine Regional and Local Bands!  
Silver Falls Brewery!  
Kenny’s Kitchen Southern BBQ!  
A Rhythm and Bones Tent!

(No outside alcohol allowed.  
Bring your own lawn chairs,  
blankets, pop up tents.  
Picnics encouraged!)

## Curator's Corner

During the July 'First Friday' opening at the museum we were surprised by a visit from Rod Wanker who delivered a framed print of the Silverton Country Club golf course's plans that had been drawn by L.C. Eastman in 1928. Chris had mentioned this in the last newsletter and I wanted to add a little bit more of the history. My personal interest is that my grandfather had been a member and as a little girl I can remember seeing his old golf clubs in the basement and wanted to play croquet with them. I was told that they were for a different game and not to touch them!



Some of the wild stories about the Country club include an article about 'Strip Golf' in the 1932 Silverton Appeal. The tournament engaged the interest of the male members and was played on a Sunday morning. "Officially listed is the clothing to be worn in order of removal: (1) sweater, (2) shirt, (3) right sock, (4) left sock, (5) right shoe, (6) left shoe, (7) athletic undershirt, (8) golf knickers, (9) shorts. Spectators will be admitted to the ninth green for a slight admission fee." In another article, (no, not more 'strip golf'), my grandfather was mentioned as having played in the semi-finals of the fall handicap which was held in October of 1932. "Norman Eastman beat Dr. Barnum of Mt. Angel, 5 and 4. Mayor L.C. Eastman bested Dr. A.W. Simmons 4 and 3. This leaves the unusual situation of father and son playing off the finals..." The article goes on to say that the membership numbered from 60 to 75, which I find very interesting.

My brother has our grandfather's clubs but he also has the clubs that my grandfather bought for our mother. Small little wooden shafted clubs in their original bag and which I was also not allowed to use for croquet. My mother was sent along with my grandfather to the golf course most likely to get her out of the house and give my grandmother a rest for a few hours. Mother enjoyed the out of doors and tagging along with her dad.

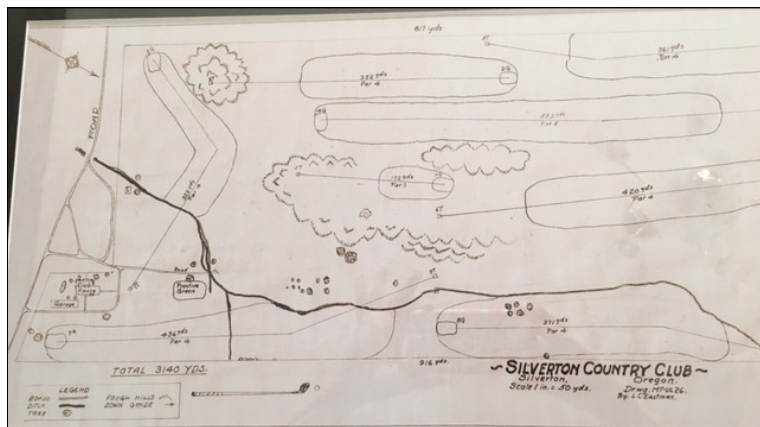


The beautifully framed print is hanging in the dining room and is on a long-term loan agreement with Rod. The actual plat for the club was drawn in May of 1928 and then Mr. Eastman used that to design the course. The blueprints of the plat were drawn by B.B. Herrick of Salem and dated 5/10/1928. The names listed on the boundary of the course are: Lucy McKillip, Terry Bros., and Fred Knight with Finlay Road as the south border.

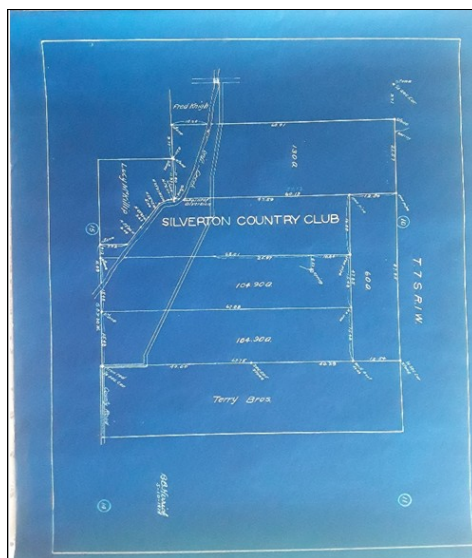
*Continued on Page 3*

*Continued from Page 2*

When the Larsen and Flynn Company moved out of their old building they were going through the things that had been stored in the basement and came across a treasure trove of blue prints. Many were of the various housing developments and additions in Silverton....among them were the blue prints for the golf course. They contacted the museum asking if we would take them and we are now very fortunate to have all of those blue prints at the museum. Knowing that the golf club plans were part of that treasure trove, Gus Frederick scanned them for Rod and the rest is history. Women were also part of the membership who had some exciting tournaments of their own and we have some very interesting pictures at the museum of their tournaments as well.



Print of Silverton Country Club plan on loan from Rod Wanker.



Silverton Country Club blueprint

*Judy Lowery*

### *Elizabeth Hollin*

Elizabeth (Betty) Hollin was a good friend to the Historical Society ever since husband Al got involved in the early 1980's, corralled by Curator (and future son-in-law) Jeff Brekas to help coordinate the relocation of Silverton's historic train depot. Before she knew it, Betty was the Curator! We still see evidence of her tenure as we sort through early accessions and documents. She was a good worker, having spent time employed at J.C. Penney's in Silverton then many years at the Woodburn canneries, where she retired after almost 30 years as a floor supervisor.

In fact, it was while working at Penney's in 1947 that she met the handsome sailor at a dance at the Silverton Armory. She and Al were married in 1948 and lived the next 70 years in the same house on eight acres on Cascade Highway and Finlay Road.

After her retirement her favorite activity was going to the summer yard sales...oh, yes, she and Al appreciated a bargain, but it was meeting people that she truly enjoyed. Betty was a longtime member of the Willards Womans club, one of the youngest members on the books. Other activities included coordinating the Immanuel Lutheran Church sales to raise money for the missions in Mexico, the Murals Society and volunteering at the Victor Point School precinct during election time.

Our dear friend passed away August 4, 2019....this housewife and volunteer extraordinaire will be greatly missed.



### Gregg Sheesley

May 7, 1948 - September 7, 2019

The featured speaker at the SCHS 2013 Annual Meeting was the incomparable Gregg Sheesley. At that time, he shared with us a display of his miniature historic Silverton businesses, built entirely by hand from wood, cardboard and found materials. Sadly, Gregg recently left us....I certainly hope Heaven is getting in a supply of wood pallets and popsicle sticks in anticipation of his arrival. Thankfully we have these few images to share.....



Gregg had lived in Silverton since 1976 and was a true Silverton fixture....he demonstrated his hobby at the Silverton Fine Arts Festival and his works have been on display at the Silver Creek (Live Local) Coffee House. He participated in many community events, including the Silverton Shindig and Homer Davenport Days. Gregg was an EMT and volunteer firefighter with Silverton for 25 years. In fact, Gregg was so involved in the community, many of his friends referred to him as the "Honorary Mayor."

We will miss you, Gregg.....



From the Silverton Appeal, early 1900's....

(Came across this the other day....probably while looking for something else. I liked the part about renewing subscriptions!)

In return for this better service which is to be freely given at the same old price (one dollar per year in advance) we only ask our readers to be prompt in renewing their subscriptions, and to kindly say a good word for The Appeal that we may be able to extend the influence of our paper for the benefit of ourselves and those who ought to come west and help build up our wonderful State. We want good, clean, progressive homes here. To this end the minds of our people must be in good, clean progressive condition, and what we read is a large part of the food given to our minds. Help us make The Appeal an appeal to the highest and best in our natures, and help us extend its influence in every honorable way possible



Sample of The Appeal in the early 1900's



Remember, your Museum will be open through Veterans Day. We will again have our display of military uniforms and memorabilia beginning in October.... truly something not to be missed.

Saturdays and Sundays, from 1 to 4 pm

*...And a Good Time Was Had By All.....*



From set up.....until the last dime was tossed....another great year! Thank you to all who made it happen!

See you next year!



**Book Signing at the Museum**



During the Homer Davenport Community Festival, one of our favorite local authors, Norm English, signed (and sold!) copies of his recent memoir, "Remembering...In Plain English." The book chronicles his life growing up in Silverton and interweaves within its pages historical references to the town...and the greater world. There are still some copies available here at the Museum.

The books sells for \$29.95 with a portion going to the Museum.

**Silverton's History in the Community**

We love it when local offices make Silverton's story a part of their décor, and we are very glad to help them! Here are the latest images from the office of Silver Creek Family Medicine.





428 SOUTH WATER STREET  
SILVERTON OR 97381

OFFICE PHONE 503-873-7070  
EMAIL US  
SILVERTON.MUSEUM@LIVE.COM

*Celebrating Over 40 Years in the Community*

**WWW.SILVERTONMUSEUM.ORG**

**Thank you to our new and renewing members,  
our generous donors and to anyone who has  
given anonymously to the Museum or any of its projects.  
You're the best!!**

Patricia Moser Mullen  
Larsen & Flynn Insurance  
Victoria Delaney  
Craig and Joan Clark  
John and Carmen Smith

Larry Brown  
Susy Riches  
Mary Ellen McCleary Fleck  
Peggy Reimer  
Richard Engeman



**Donation in Memory of Elizabeth (Betty) Hollin**

Ron and Jane Jones  
Donna R. Smith  
Nora Schliske

**We are so grateful for the support of all our  
members and donors!!**

Postcard sent to Cassie Blackerby  
From "Aunt A" - July 1911

**Your S.C.H.S. Board**

Victor Madge	President
Norm English	Past-Pres.
Gus Frederick	Vice-Pres.
Chris Schwab	Secretary
Tracy Duerst	Treasurer
Judy Lowery	Curator
Kathy Hunter	Membership
Fred Parkinson	
Ruth Kaser	
Corey Christensen	
Russ Gould	

**If you received an  
overdue notice with your  
newsletter, we appreciate  
your prompt response.  
Thank you!**